



WAIWERA SOUTH SCHOOL

Tauite
Nurture

Whakamanawa
Inspire

Whanake
Grow



16 May Street
Waiwera South
RD 2
Clinton 9584

office@waiwerasouth.school.nz
www.waiwerasouth.school.nz

(03) 4157 973

Newsletter, Issue 15: 10th November, 2021

Upcoming Events

Thursday 11th November	Yr 5-8 Tree Planting at Waiwera Corner 1.15pm
Wednesday 17th November	Top Team - Finale
Thursday 18th November	Technology Yr 7&8's
Friday 19th November	End of Year Trophies - Due back today Photo Order Forms Due 2022 Stationery Order Forms Due School Working Bee - 3pm
Tuesday 23rd November	"Waiwera South School Only" Quadrathlon - Postponement 25th November
Wednesday 24th November	Year 8 SOHS Visit - 9.30am to 11.30am
Thursday 2nd December	Technology Yr 7&8's - Last Day
Monday 6th December	BoT Meeting - Senior Room 7pm
Tuesday 14th December	Save the Date - Prize Giving Night
Wednesday 15th December	Last Day of Term 4

It is so good to see the sunshine - We have had some amazing weather lately & the students love doing their reading out in the fresh air. SO GOOD!!!!



NOTE FROM THE PRINCIPAL

Kia ora tātou

We have had a few visitors from the ministry and various other places at school lately, the one consistent thing that is passed on to us is what a great wee school we have, and those that are lucky enough to have been here while the children are present have also commented on our neat, polite, engaged students. It is always good to look at what we do have and reflect on how lucky we are. We have a super supportive community and a fabulous little school at the centre of it and I thank you for the contributions you all make to keep our school humming.

I was shared this powerful piece of writing by Whaea Peggy Burrows yesterday and to me, it really sums up what we are all going through. "Haere taka mua, taka muri. Kaua e whai. Be a leader, not a follower. When our rangitahi are loved and supported, they will move mountains. Our wero - (challenge) - waiho i te toipoto, kaua i te toiroa, is to stick together, support each other and not let anyone feel like they don't belong, because no one succeeds without the support of those around them. Kāhore taku toa i te toa takitahi, he toa takitini. Ko Haeata tātau!

The Smiddles (Yr 5-8s) are heading down to the Waiwera Corner on Thursday - we will be doing some more stream testing with Craig Simpson from Otago South River Care followed by some planting of the natives the children have grown at school.

After November 15th all parent helpers and volunteers at school, and at school based activities must have had their first vaccination. This includes parents transporting, day trip helpers and coaches of our sports teams. Thank you to the large number of parents who have already filled in the google form and sent/brought their vaccination information into school. I am required to maintain a vaccination record, and will have to ask you for this if you are going to assist us in anyway. Once I have it on record, you will not be asked to supply it again for future events. This information will be kept confidential.

I hope this fabulous weather sticks around for a wee while longer - it is so nice seeing all the children out enjoying the weather and just being with their friends - long may it continue.

Noho mai rā, Kaz Bissett

Can we please have all
"End of year trophies"
returned to the office by
Friday 19th November
Thank you kindly



TREE PLANTING - Parents & community welcome



This is for the Year 5-8 students. Wear your old/farm clothes and bring a spade/shovel to school (if you have one). Gumboots recommended.

Leaving school at 1.15pm on THURSDAY 11th November. We will be heading down to the Waiwera Corner to continue our planting work.



SOCIAL SQUASH

Come along to the Clutha Squash Club. Bring along some mates and have a friendly hit of squash. All school-aged children welcome, rackets and balls provided.

5pm - 6pm, every Tuesday in term 4

For more info email Zoe at zoetaylor1811@gmail.com

TRY IT. PLAY IT. LOVE IT.



Waiwera South School POOL IS NOW OPEN for the 2021/2022 season

Touch base with the office if you are interested in purchasing a key for the season

ONCE YOUR INVOICE HAS BEEN PAID IN FULL your key will be issued

\$25.00 for the season



TERM TWO - HOT LUNCH ROSTER



Date	Lunch	Rostered
19th November	Wraps	Cleghorn & Kreft
3rd December	Sausage & Bread	Forde & S.Campbell

TERM 4 HOT LUNCHES HAVE BEEN CARRIED OVER FROM TERM 3!!!

Nic will email the list of names for the orders that you all put through last term for your reference. If you haven't ordered & would like to, please touch base.

Please note, the parent help that is required on each day.

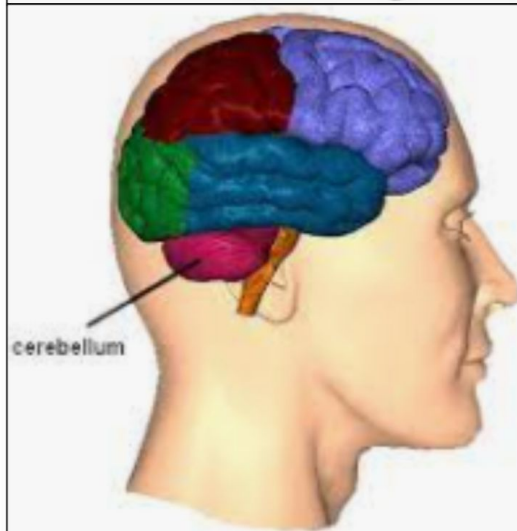
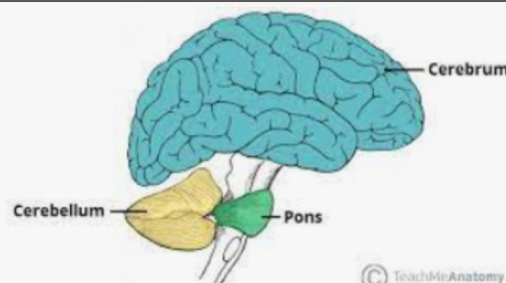
SENIOR ROOM

As part of their Brilliant Body inquiry this term, the Year 7 and 8s have been learning about the functions of the brain. These are a few snippets of some of the information slides they have created.

About the Cerebellum

The cerebellum also known as the little brain is a part of the brain. It is located at the back part of our brain by your spinal cord. The cerebellum is important to maintaining balance, having coordination and speech. Without it we would not be able to do simple tasks like bending over and we would not be able to balance and move around. It is a very important part to body because if we did not have it we would not have the coordination to ride a bike.

By Freya Whiteside

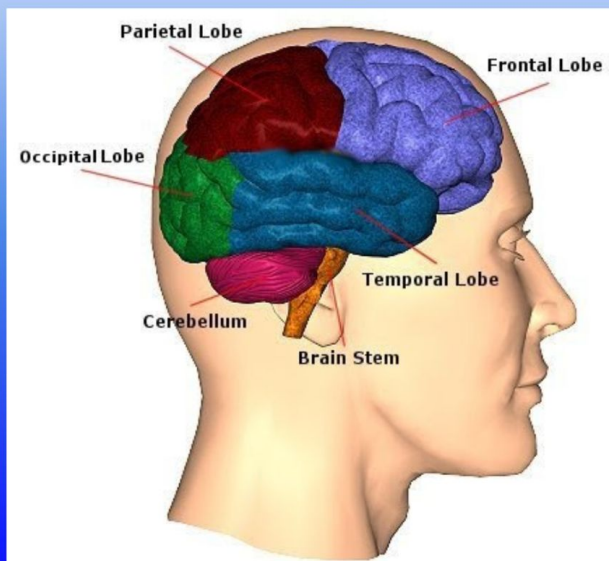


By Libby Campbell

What happens if you damage your Parietal Lobe

If you damage one side of your parietal lobe it can cause numbness and a paralysis sensation. It can affect different people and they can have difficulty identifying sensation, location, types of pain, heat, cold and lots more.

But if you damage the middle part you can not tell the difference of left and right and can have problems with calculations and with your writing. Also they can have trouble sensing where their body parts are.



MIDDLE ROOM

When the Year 7&8s were away at Technology last week, the Year 5&6s got creative in the kitchen. They made some chocolate chip biscuits which they used to transform into a mouth to fit with our inquiry unit of 'The Brilliant Body'. They proved to be pretty tasty!



We made these models to show how our lungs work! The balloon at the bottom works like your diaphragm - a strong muscle that expands and contracts to cause your lungs to fill with air and then empty out again. The movement of the balloon matches your breathing - when you breathe in, your lungs fill with air just like the balloon inside the bottle did. When you breathe out, your diaphragm contracts (or squeezes in) pushing all the air out of your lungs.



JUNIOR ROOM

The junior room has been doing a lot of learning about 'their amazing bodies'.

Here are some pictures of them learning how heart valves work, making a digestive system and learning how it works. They also made a brain hat where it shows how different parts of the brain controls different things in our bodies.

We truly are amazing!



Waiwerian's out there doing it...

Please send in any photos and a small blurb about a Waiwerian out there doing anything exciting.

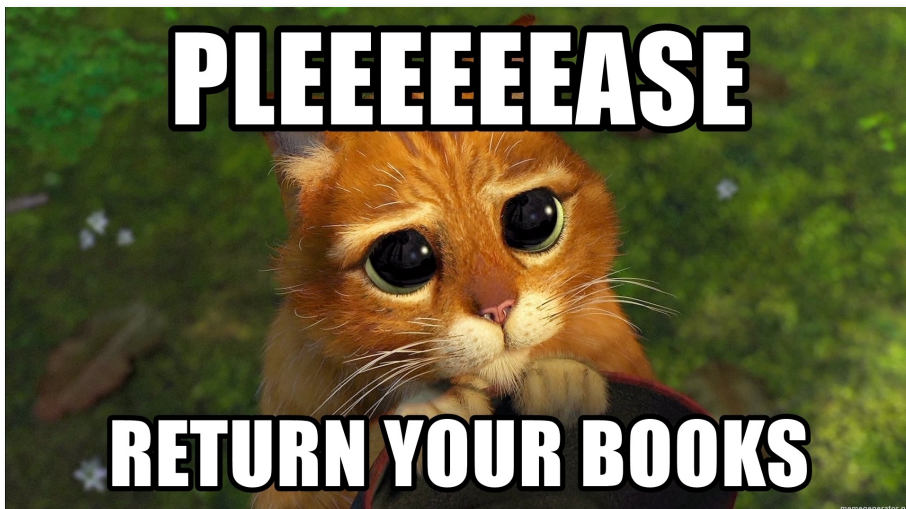
We are also encouraging the kids to put forward the excitement too - You may have to help them email it through.

Please send information to Nic, via email: office@waiwerasouth.school.nz



Ryan Campbell has started BMX this season, out at the Kaitangata BMX Club. Wednesday last week he earned himself a 1st place ribbon overall for his 6 races around the track. Well done Ryan!!! Give it your all tonight at BMX!!!!

Can we please have all library books back to school by Friday 10th December.



We would also like all school reading books to be returned as well. Please have a good look at home, under beds, behind the couch etc, for any that may have been misplaced during the year. We love to get books returned.

HOWEVER....

We will hold a "Waiwera School Only" Quadrathon on the same dates (23rd Nov or postponement of 25th November).

Students can still compete for the fastest Waiwera Student Trophy for 2021.

We will hold a smaller course for the Juniors to have a go.

A note requesting help is somewhere in a child's bag.

QUADRATHON
Because of **COVID**
CANCELLED
WE NEED YOUR HELP
SAVE THE DATE
Tuesday 23th NOVEMBER
or postponement Thursday 25th NOVEMBER



Thank you so much Mark & Madeline for donating a trailer load of your wonderful compost. Mrs Holden along with her gardening group pitched in and got it in place, ready to plant out.

Thank You
Mark & Madeline Anderson



SCHOOL PHOTOS

Order Forms will be sent home by the end of the week

ORDERS DUE
Friday 19th Nov



Don't Forget: As at 11.59pm, Friday 22 October it became a requirement for students aged 12 and over to wear a face covering on school transport.

All other children are encouraged to wear a face covering on school transport.



Working Bee



WE ARE SEEKING HELPERS
TO LEND A HAND WITH
OUR WORKING BEE.

REMEMBER :
MANY HANDS MAKE LIGHT WORK!

FRIDAY 19th NOV
at 3pm!